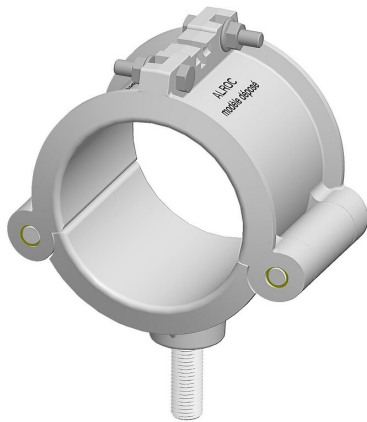




See online technical sheet

/ CSC V SERIE
Hinged single cleats



/ Standards

- IEC 61914
- RTE agregation

/ Use

Single cleats allow the holding of underground cables in horizontal or vertical position.




They are intended for the fixing of MV and HV cables of 42 to 142mm diameter.

Protective liner to be ordered separately.

/ Advantages

- Simple operation with easy close hinges
- High vertical slip resistance
- UV resistant
- Protective cable liner







/ Areas of activity

-  Electrical distribution
-  Production
-  Transport

/ Technical specifications

- **Areas of activity** : Electrical distribution, Production, Transport
- **Cable configuration** : Simple cleat
- **Material** : AS13 Aluminium / Stainless Steel
- **Load (daN)** : 788
- **Distance between conductors (S) (mm)** : 125
- **Distance between cleats (Distance D) (m)** : 1
- **Min / Max Operating Temperature (°C)** : -25° / 85°
- **Collar type** : Aluminium
- **Cable configuration** : Simple
- **Material** : AS13 Aluminium, Stainless steel
- **Tools king** : Specific tools
- **Product universe** : Work
- **Penta marque** : PENTA ESP

/ Associated products

	Reference	Designation
	QCF SERIE	QCF SERIE
	QCA SERIE	Articulated end cleats
	PCSC SERIE	Mounting plates
	CAE	Pin wrench
	CAD	Socket wrench
	PCA SERIE	Singles protections

Product reference	Cleat diameter	Cable diameter	Length	Width	Height
CSC 60 V	60 mm	42 - 47 mm	112 mm	66 mm	121 mm
CSC 65 V	65 mm	47 - 52 mm	112 mm	66 mm	121 mm
CSC 70 V	70 mm	52 - 57 mm	121 mm	66 mm	125 mm
CSC 75 V	75 mm	57 - 62 mm	126 mm	66 mm	131 mm
CSC 80 V	80 mm	62 - 67 mm	134 mm	80 mm	138 mm
CSC 85 V	85 mm	67 - 72 mm	140 mm	80 mm	144 mm
CSC 90 V	90 mm	72 - 77 mm	145 mm	80 mm	150 mm
CSC 95 V	95 mm	77-82 mm	151 mm	80 mm	158 mm
CSC 100 V	100 mm	82 - 87 mm	157 mm	100 mm	163 mm
CSC 105 V	105 mm	87 - 92 mm	163 mm	100 mm	168 mm
CSC 110 V	110 mm	92 - 97 mm	169 mm	100 mm	175 mm
CSC 115 V	115 mm	97 - 102 mm	174 mm	100 mm	180 mm
CSC 120 V	120 mm	102 - 107 mm	180 mm	100 mm	186 mm
CSC 125 V	125 mm	107 - 112 mm	186 mm	100 mm	191 mm
CSC 130 V	130 mm	112 - 117 mm	192 mm	100 mm	194 mm
CSC 135 V	135 mm	117 - 122 mm	198 mm	100 mm	205 mm

Product reference	Cleat diameter	Cable diameter	Lenght	Width	Height
CSC 140 V	140 mm	122 - 127 mm	201 mm	100 mm	205 mm
CSC 145 V	145 mm	127 - 132 mm	206 mm	100 mm	210 mm
CSC 150 V	150 mm	132 - 137 mm	210,3 mm	100 mm	214 mm
CSC 155 V	155 mm	137 - 142 mm	215 mm	100 mm	220 mm