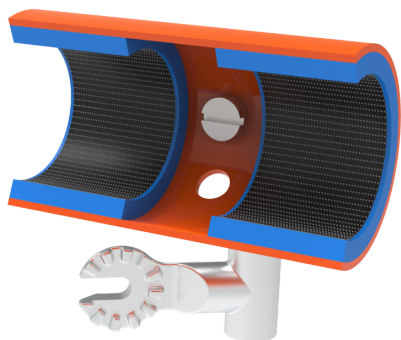




See online
technical sheet

/ LW11-06

Copper conductor cleaning brush



/ Standards

- IEC 60832-2

/ Use

The copper conductor brush is used to clean copper conductors before making an electrical connection. To ensure that the conductor is completely cleaned, the brush must be turned 180°.

It can be used with a universal stick or by hand.

Universal light alloy tip. Open cylindrical body, made of synthetic material, fixed on a metal swivel support protected against corrosion.

The abrasive patch is attached to the inside of the body.

/ Areas of activity



Electrical distribution



Transport

/ Technical specifications

- **Dimensions (mm)** : 120x110x65mm
- **Pole kind** : Pole accessories
- **Operating voltage (V)** : HTA (1 000 V to 50 000 V)
- **Pole adaptators** : Universal (U)
- **Accessory weight (kg)** : 0,3
- **Overall dimensions (Inch)** : 4,8x4,3x2,6 in.
- **Accessory weights (lbs)** : 0,6