



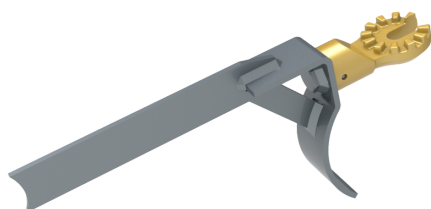
See online
technical sheet

/ LW11-35

Cotter key pusher

/ Standards

- IEC 60832-2



/ Use

The pinning and unpinning device is used to :

- Push back, the pins with its straight blade, without extracting them.
 - Use the curved blade to reposition the pins to their original position.
- Universal tip, straight and curved blade body, made of metal protected against corrosion.

/ Areas of activity



Electrical distribution



Transport

/ Technical specifications

- **Dimensions (mm)** : 235x120x25mm
- **Pole kind** : Pole accessories
- **Operating voltage (V)** : HTA (1 000 V to 50 000 V), HTB (> 50 000 V)
- **Pole adaptators** : Universal (U)
- **Accessory weight (kg)** : 0,45
- **Overall dimensions (Inch)** : 9,3x4,7x1,0 in.
- **Accessory weights (lbs)** : 1,0