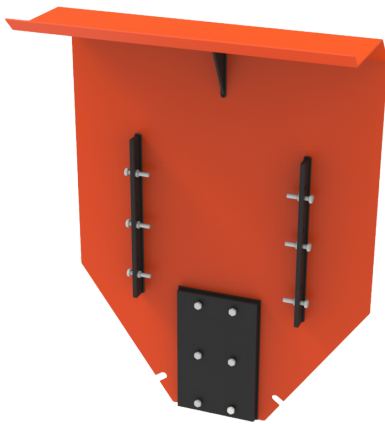


/ LW05-11-PRO2
Main cover model 2



See online
technical sheet



/ Standards

- IEC 61229

/ Use

In combination with the conductor covers, the suspension string and pole head cover is used to allow :

- The operator to reduce the distance between his working area and the parts protected by the cover.
- It can also be used to avoid accidental contact between phase-to-phase and phase-to-earth.

In all cases, protruding network elements must be removed before the cover is fitted.

If the conductor is held by a conductor support stick or sticks, the suspension clamp must also be removed.

/ Areas of activity

 Electrical distribution

/ Technical specifications

- Product type : Protector
- Operating voltage (V) : HTA
- Overall dimensions : 790x560x235mm
- Weight (Kg) : 3,3
- Overall length (inch) : 2'7"x1'10"x9"
- Weight (lbs) : 7,3