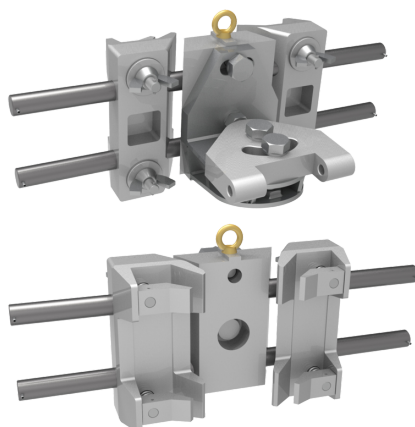




See online
technical sheet

/ LW02-14

Pivoting attachment for tower type saddle



/ Use

The saddle for twin and cross angle pylons is used to receive the beam and allow its articulation from a vertical position to a horizontal position. The swivel head (of a saddle with a sleeve for example) can also be fitted on the plate of the tower saddle to receive a sleeve with a diameter of 64 mm (2.5"), for example.

/ Areas of activity



Electrical distribution



Transport

/ Technical specifications

- **Product type** : Positioning devices for working at height
- **Positioning devices for working at height** : Seat
- **Operating voltage (V)** : HTB (> 50 000 V)
- **Length (mm)** : 550
- **Width (mm)** : 300
- **Height (mm)** : 200
- **Weight (kg)** : 19
- **Support material** : Metal
- **Maximum working load (MWL)** : 400 daN