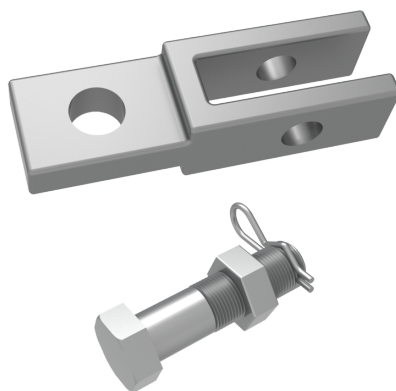




See online
technical sheet

/ LW09-15

Mixed adaptation piece



/ Use

This mixed adapter is designed to allow an angular displacement of around 20° between the screw jacks and, for example:

- the upper spreader bars,
- the mass-side spreader bar,
- the spreader bar under RL 15.

The degree of freedom obtained with this mixed adapter allows the two-flange saddle to be installed at an angle of a few degrees to the plumb line of the spreader bar and the load pick-up brackets.

/ Technical specifications

- **Product type** : Accessories
- **Operating voltage (V)** : HTB (> 50 000 V)
- **Weight (kg)** : 1
- **CMU (daN)** : 3500