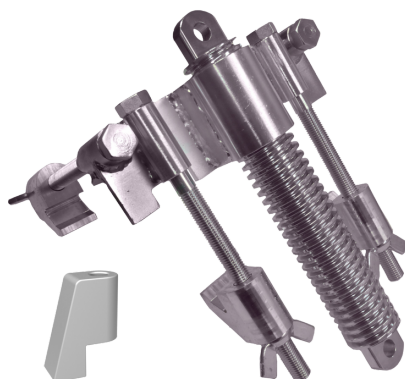




See online
technical sheet

/ LW07-05

Adjustable pylon saddle



/ Use

Attached to a upright angles and combined with a pole clamp (sold separately ref. LW07-13-64), the adjustable pylon saddle is used to guide or immobilise a conductor support stick.

When used in combination with a saddle and frame, or in pairs, the saddle can be used to adjust the position of the pole and give it the desired inclination by means of an adjustment screw.

When the saddle is to be placed on angles larger than 100 mm, the fixing rods must be equipped with hooks and spacers for large angles. When the saddle is to be placed on flat or I-beams, two of these hooks should be replaced with flat hooks.

/ Areas of activity



Electrical distribution



Transport

/ Technical specifications

- Operating voltage (V) : HTB (> 50 000 V)
- Length (mm) : 292
- Width (mm) : 336
- Height (mm) : 240
- Pole-climbers max capacity (mm) : Cornières : 50 à 220mm
- Weight (kg) : 9
- Maximum working load (MWL) : Perpendiculaire à la structure : 270 daN Parallèle à la structure : 400 daN