

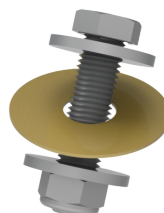


See online
technical sheet

/ LW07-07 Vice clamp



LW07-07



LW07-07-AXE

/ Use

The vice is used to create an anchor point.

It is particularly suitable for smooth parts, such as a shunt or shunt tube.

In combination with a pole clamp or another vice.

The clamp can be used to secure two parts such as shunts, shunt tubes, conductors between each other.

The vice can also be used in combination with a pin pole clamp (ref LW07-14-64) .

The vice must not be used on an insulating tube.

The jaws have an elastomer coating.

A hole in the body allows two vices or a pin pole clamp to be connected.

Accessory :

Nut and bolt assembly with spacer and washers

/ Technical specifications

- Operating voltage (V) : HTB (> 50 000 V)
- Pole-climbers max capacity (mm) : 30 à 50mm
- Maximum working load (MWL) : 150

Product reference	Lenght	Width	Height	Weight (kg)
LW07-07	230 mm	85 mm	60 mm	0,75
LW07-07-AXE	-	-	-	-