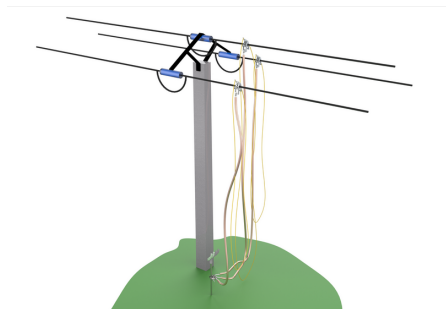




See online  
technical sheet

## / GWIRE

Grounding and short-circuiting device from the ground operated by insulating rope



## / Standards

- CEI 61230
- IEC 62192




## / Use

The clamp is positioned and unhooked from the ground using an insulating rope passed over the conductor. The e-clamp is positioned on the conductor by pulling on the 1st rope. It is then unhooked by pulling on the 2nd cord. The rope is passed over the conductor using a telescopic pole fitted with an intelligent hook.

## / Advantages

- Easy to use on all types of terrain without climbing
- Automatic spring clamp, no manual tightening required
- Low weight constraints
- Fast and easy to use
- Installation of a very high ground malt from the ground level

## / Areas of activity

-  Electrical distribution
-  Civil security
-  Transport

## / Technical specifications

- Product kind : Dispositif
- Clamp material : Aluminium
- Clamp tightening (mm) : Ø3 à 32mm
- Conductor type : Round
- Operating voltage (V) : HTA (1 000 V to 50 000 V)
- Field of use (environment) :
- Way of access : From the floor
- Phase câble
- Phase cable number : 2
- Floor cable
- Insulating rope : 3 x 25m
- Measurement : 500x450x250mm



Product reference	Short-circuit intensity kA/1s	Phase(s) cable cross-section (mm <sup>2</sup> )	Phase(s) cable length (m)	Cross-section (mm <sup>2</sup> )	Floor cable length (m)	Weight (kg)
GWIR8HN	8	35	15	35	15	22
GWIR8HP	8	35	15	35	15	25
GWIR13HN	13	50	15	50	15	29
GWIR13HP	13	50	15	50	15	32
GWIRE13HPIS	13	50	18	50	18	35