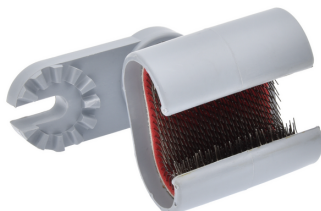




See online
technical sheet

/ TB20-TB25

Brush for copper or aluminium conductors



/ Use

For surface stripping of conductors, for contact or remote work (when mounted on a universal pole ref. TP30).
C-shaped swivel body made of insulating material.
Metal 'file card' brush glued to the inside of the body.

/ Technical specifications

- Pole kind : Pole accessories



Product reference	Dimensions (mm)	Weight (Kg)	Designation
TB20	90x75x60	0,09	Brush for copper conductor
TB25	90x75x60.	0,10	Brush for aluminium conductor