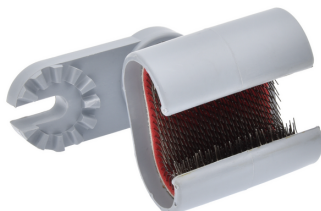




See online
technical sheet

/ TB25

Brush for copper or aluminium conductors



/ Use

For surface stripping of conductors, for contact or remote work (when mounted on a universal pole ref. TP30).
C-shaped swivel body made of insulating material.
Metal 'file card' brush glued to the inside of the body.

/ Technical specifications

- Dimensions (mm) : 90x75x60.
- Pole kind : Pole accessories
- Weight (Kg) : 0,10
- Designation : Brush for aluminium conductor