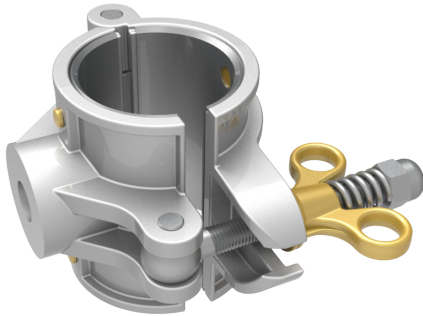


/ LW07-14-64
Flat pole clamp D64



See online technical sheet



/ Standards

- IEC 61236

/ Use

Directly attached to the saddle, this clamps brings the conductor support stick closer to the support when required for certain interventions.

The use of a rope block is recommended for the maneuvering of the support stick Ø 64 mm (2 ½”).


It is recommended to check the tightening torque of the wingnut using a torque wrench and the wing nut socket (sold separately).

Corrosion protected metal sleeve consisting of :

- 2 shells with stainless steel fittings
- A wing nut with an anti-friction washer

Recommended tightening torque on the wing nut: 17 N.m / 12.5 lb.ft (wing nut socket sold separately)

/ Areas of activity

-  Electrical distribution
-  Transport

/ Technical specifications

- Operating voltage (V) : HTA, HTB
- Length (mm) : 165
- Width (mm) : 155
- Height (mm) : 100.
- Pole-climbers max capacity (mm) : $\text{Ø}64 \pm 1$
- Weight (kg) : 1,3
- Maximum working load (MWL) : Dans l'axe de la perche : 220daN Perpendiculaire à l'axe de la perche : 310daN