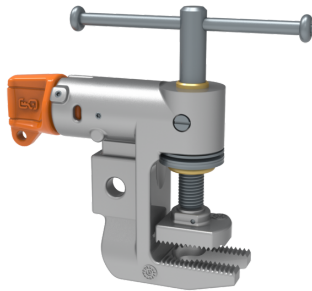


/ SANBE2025
Earthing clamp



See online technical sheet






/ Standards

- CEI 61230

/ Use

The SANBE2025 is a grounding and short-circuiting vice. It consists of an aluminum body and mobile shoe, and a corrosion-protected clamping assembly. The clamping assembly is fitted with a hand-operated lever. A stainless steel bolting system accommodates TFK type grounding cables, diameter 12. SMAPE key supplied only with purchase of Pliers/Vice set.

/ Areas of activity

-  Electrical distribution
-  Civil security
-  Transport

/ Technical specifications

- Product kind : Vices
- Clamp material : Aluminium
- Clamp tightening (mm) : Boule : 35
- Conductor type : Ball
- Operating voltage (V) : HTB
- Short-circuit intensity kA/1s : 40
- Measurement : 165x165x40mm
- Weight (kg) : 1,2