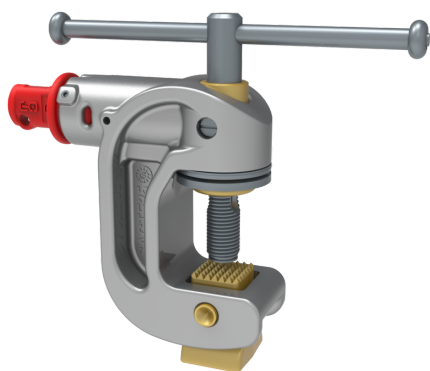




See online technical sheet

/ SAGTE25
Earthing clamp



/ Standards

- CEI 61230

/ Use

The SAGTE25 is a grounding clamp with SMAPE, ideal for grounding towers.

It features an aluminum alloy body, a fixed pro-aluminum copper alloy shoe and a corrosion-protected release assembly.

The clamping assembly features a hand-operated lever and a penetrating tip to ensure secure attachment to the pylons.

A stainless steel bolt mounted on the fixed shoe accommodates TFK-type grounding cables with a 12mm terminal diameter.

SMAPE key supplied only with purchase of Pliers/Vice set.

/ Areas of activity

 Electrical distribution

 Civil security

 Transport

/ Technical specifications

- Product kind : Vices
- Clamp material : Aluminium
- Clamp tightening (mm) : Plat : 40
- Conductor type : Flat
- Operating voltage (V) : HTB (> 50 000 V)
- Short-circuit intensity kA/1s : 40
- Measurement : 190x160x50mm
- Weight (kg) : 1,8