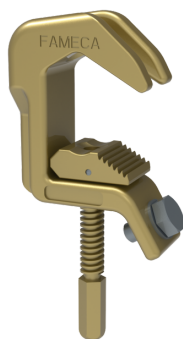




See online  
technical sheet

## / NBD25

Earthing clamp for fixed ball points



## / Standards

- CEI 61230



## / Use

Clamp specially designed for earthing fixed ball points.  
Extremely easy to use on all shapes of conductor and fixed points.  
Angled jaw makes it ideal for flat bars.  
M10 stainless steel screws included.

## / Advantages

- Fast and easy to use
- System that facilitates the installation of malt

## / Areas of activity

-  Electrical distribution
-  Industry
-  Civil security
-  Transport

## / Technical specifications

- **Product kind** : Vice grips
- **Field of use (environment)** : Station office
- **Clamp material** : Cupro-alu
- **Clamp tightening (mm)** : Rond : Ø7 à 37mm, Plat : jusqu'à 37mm, Boule : Ø20 et 25mm
- **Conductor type** : Ball, Round, Flat
- **Operating voltage (V)** : HTA
- **Station office** : Before electric meter
- **Short-circuit intensity kA/0.5s** : 40 kA/0,5s sur boule Ø25mm
- **Short-circuit intensity kA/1s** : 31,5 kA/1s tout conducteur; 20 kA/1s sur boule Ø20mm
- **Weight (kg)** : 0,85

| Product reference | Nozzle type       | Measurement |
|-------------------|-------------------|-------------|
| NBD25AP           | Hexagonal (AP)    | 165x85x35mm |
| NBD25B            | Bayonet (B)       | 225x85x35mm |
| NBD25M            | Fameca handle (M) | 215x85x35mm |