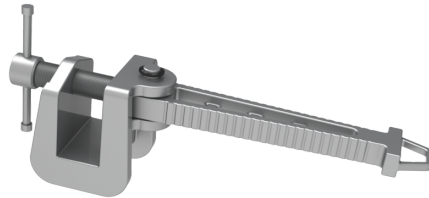


**/ LW02-05**  
Footrest



See online  
technical sheet





**/ Use**

The footrest, should be attached to the corner of the upright section of a pylon, this will allow the operators feet to remain in a flat position.  
They are designed to give a more comfortable working position.

**/ Advantages**

- Lighter
- Quick and easy to use

**/ Areas of activity**

-  Electrical distribution
-  Transport

## / Technical specifications

- **Product type** : Positioning devices for working at height
- **Positioning devices for working at height** : Footplate
- **Operating voltage (V)** : HTA (1 000 V to 50 000 V)
- **Weight (kg)** : 1,5
- **Support material** : Metal
- **Maximum working load (MWL)** : 125 daN
- **Dimensions (mm)** : 255x75x56
- **Dimensions (inch)** : 10"x3"x2"