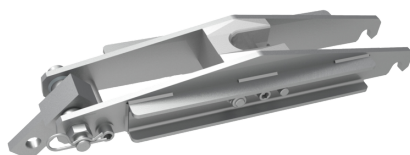




See online
technical sheet

/ LW09-06

Ball-socket lifting beams for alignment or anchoring



/ Use

Alignment :

Placed under the lower ball-socket of a single or double insulator chain, the ball-socket lifting beam, in conjunction with one or two insulating tie rods, enables the weight of the conductor to be taken up when the suspension chain is changed, preventing the protective rings from tilting.

Ball-socket lifting beams are normally used when single or double chains are used (single conductor or double, triple or quadruple bundle).

Combined with a PD 30/400 spreader extension (ref. LW10-01-M) and an end cap for the extension, the ball-socket spreader allows the replacement of an insulator chain or a double chain. Its CMU is limited to 1300 daN.

Anchoring:

The ball-socket lifting clamp for alignment or anchoring, combined with a lifting clamp on a twin clamp, takes up the mechanical tension of the lower chain of a triple anchor.

/ Technical specifications

- Operating voltage (V) : HTB (> 50 000 V)
- Length (mm) : 500
- Width (mm) : 200
- Height (mm) : 100
- Weight (kg) : 7
- CMU (daN) : 5000