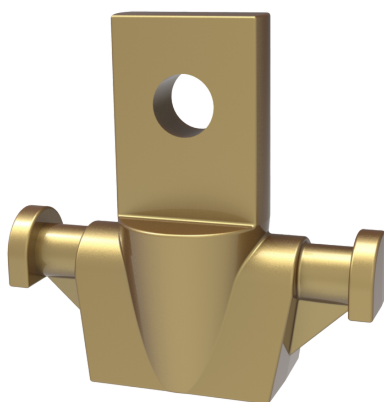




See online
technical sheet

/ LW09-10

Tenon tee (Model 2)



/ Use

Attached to the clevis end of a clevis-and-tenon tie rod (ref. LW04-18), the other end of which is equipped with a swivel ring (ref. LW09-08) and clevis or a clevis-and-screw jack, the tenon tee for lifting beams (model 2) makes it possible to create a tee-shaped tie rod.

/ Technical specifications

- **Product type** : Accessories
- **Operating voltage (V)** : HTB (> 50 000 V)
- **Length (mm)** : 125
- **Width (mm)** : 50
- **Height (mm)** : 130
- **Weight (kg)** : 1,5
- **CMU (daN)** : 5000