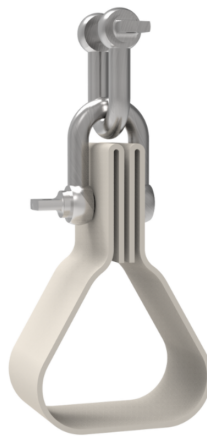




See online
technical sheet

/ CAO SERIE

Eyelet suspended strap cleats



/ Use



Eyelet suspended strap cleats are used to suspend the cables assembled in twisted loom. These cables do not bear short circuit forces. The eyelet suspended strap cleats are made with non-corrosive materials.

To allow great resistance, the strap does not contain any seam and is doubled at the level of four hot-drilled 10mm holes.

/ Advantages

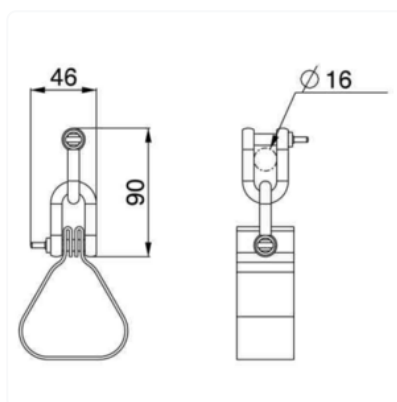
- UV resistant
- Flame retardant support strap

/ Areas of activity

-  Electrical distribution
-  Transport

/ Technical specifications

- **Areas of activity** : Electrical distribution, Transport
- **Collar type** : Strap collar
- **Tools king** : Specific tools
- **Material** : Stainless steel



Product reference	Height	Section
CAO40-3-240-2-M12x90	180 mm	150 - 240 mm ²
CAO40/3x150-2	90 mm	95 - 150 mm ²
CAO40/3x240-2	90 mm	150 - 240 mm ²
CAO40/3x95-2	90 mm	10 - 95 mm ²