



See online
technical sheet

/ LWFA32

Two-piece conductive suit: jacket/pants, for live working



/ Standards

- CE category : Catégory 3

/ Use

The use of this suit is limited to power-frequency electrical networks with nominal voltages from 132 kV AC up to 800 kV AC or ± 600 kV DC (Class 1) and, with the conductive fabric face shield, up to 1000 kV AC or ± 800 kV DC (Class 2).

Conductive clothing is used to limit the flow of capacitive currents through the operator's body in the presence of intense electric fields.

In all cases, gloves and socks must be used with the suit. Snaps, which ensure electrical continuity between the suit and the various accessories, must be fastened (e.g. gloves, socks and shoes).

When working at potential, the potential clamp, connected to the conductive garment by stainless steel screws and wing nuts on the left and right sides of the jacket, must be connected to the phase on which the work is being carried out. When the operator moves, the potential clamp can be disconnected and reconnected, as long as the operator, wearing gloves, remains connected to the conductor.

/ Advantages

- Very light: good weight/performance ratio

/ Areas of activity



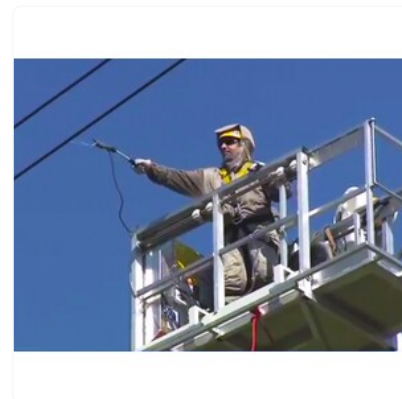
Electrical distribution







Transport

/ Technical specifications

- Main color : Grey
- Size : S, M, L, XL, 2XL, 3XL
- Fastening : Button, Snap fastener
- Collar style : Low blas collar
- Cloth composition table : Vest and pant - aramide fibre d'argent



/ Accessories

	Reference	Designation
	LWFA15	Face screen made in conductive fabric for live working
	LWFE46	Conductive gloves, for live working
	LWFE47	Pair of conductive socks for live working
	LWFA48	Conductives safety boots for live working